



Crashing waves at Kee Beach (Napali Coast in the distance)



Movie of crashing waves at Kee Beach





Trees on the north side of Kauai



View over a bridge, north side of Kauai





Movie: Driving along the north side of Kauai





Waimea Canyon





Waimea Canyon





The bottom of Waimea Canyon





Waimea Canyon hike





Waimea Canyon hike, giant fern



Little ferns





Waimea Canyon hike, typical path up a hill



Waimea Canyon hike, fully frazzled





Waimea Canyon hike, resting at the stream

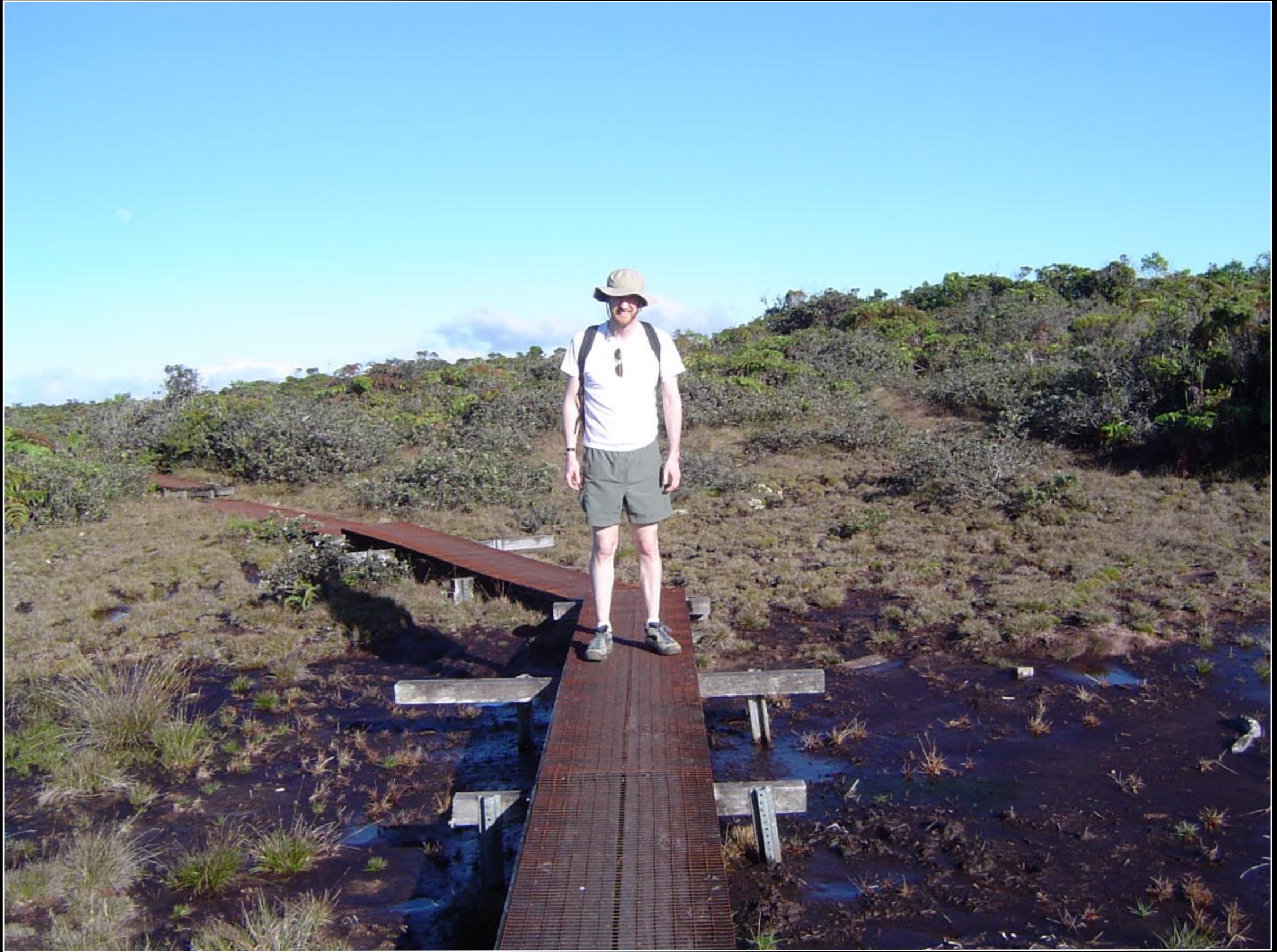
Waimea Canyon hike, steep boardwalk steps





Waimea Canyon hike, swamp on the top of the mountain





Waimea Canyon hike, swamp on the top of the mountain





View of Hanalei Bay at the end of the trail





Waimea Canyon hike, view of Napali canyons





Returning from Waimea Canyon hike

Waimea Canyon hike, never ending...





View of Kauai from the plane

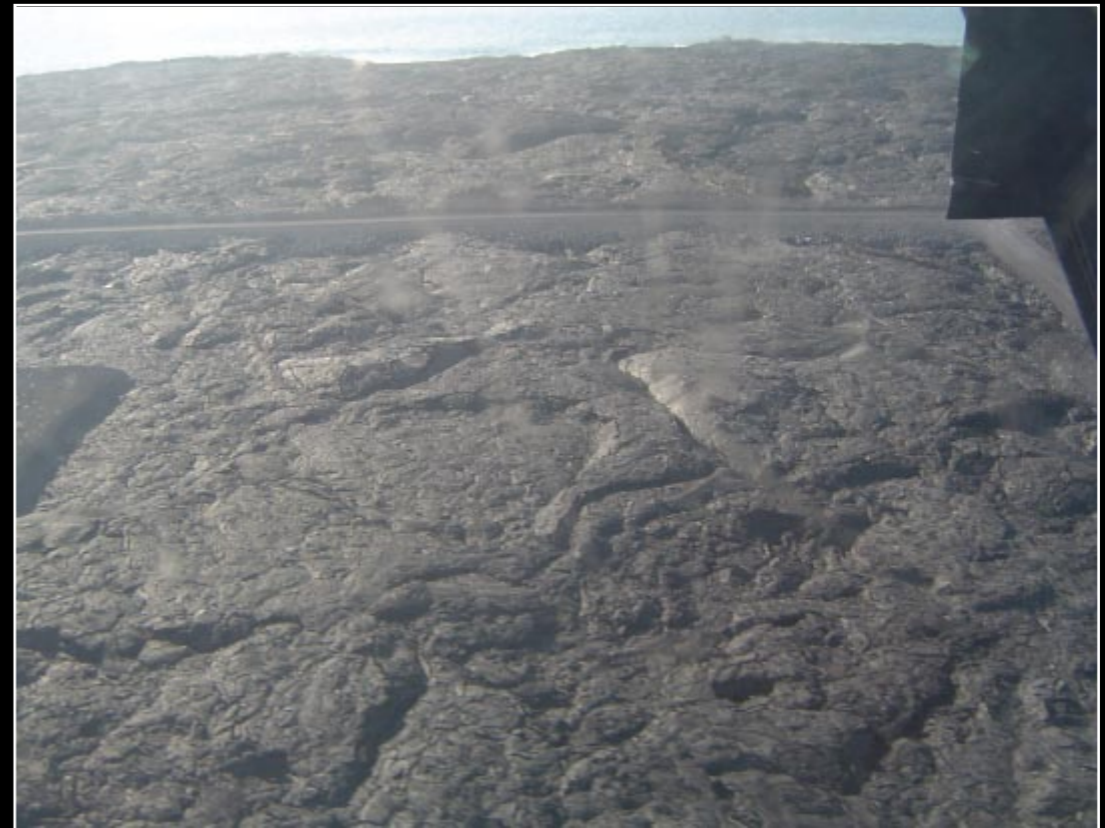


Volcanic mountain above the clouds





The coast of the Big Island from the plane



"Brownie batter" lava view from the plane





Looking up in the lobby of the Palace Tower, Hilton Waikoloa



The entrance of the Palace Tower at the Hilton Waikoloa





White coral among lava rocks







North side of the Big Island

















An a'a lava field (sharp as glass!)





A'a lava to scale



Lava "brownie batter"





See the double rainbow?





Ground cover on the beach dunes







Movie: The sound of wind in the palms--like rain





Black sand beach on the west coast of the Big Island





Gnarled trees on a beach hike





Stone towers at the beach





Our own Andy Goldsworthy





Two humpback whales



Humpback whale tail





Spinners dolphins



The side of a humpback whale





Movie: The road to the Edge of the World B&B





The view from our room at Edge of the World B&B



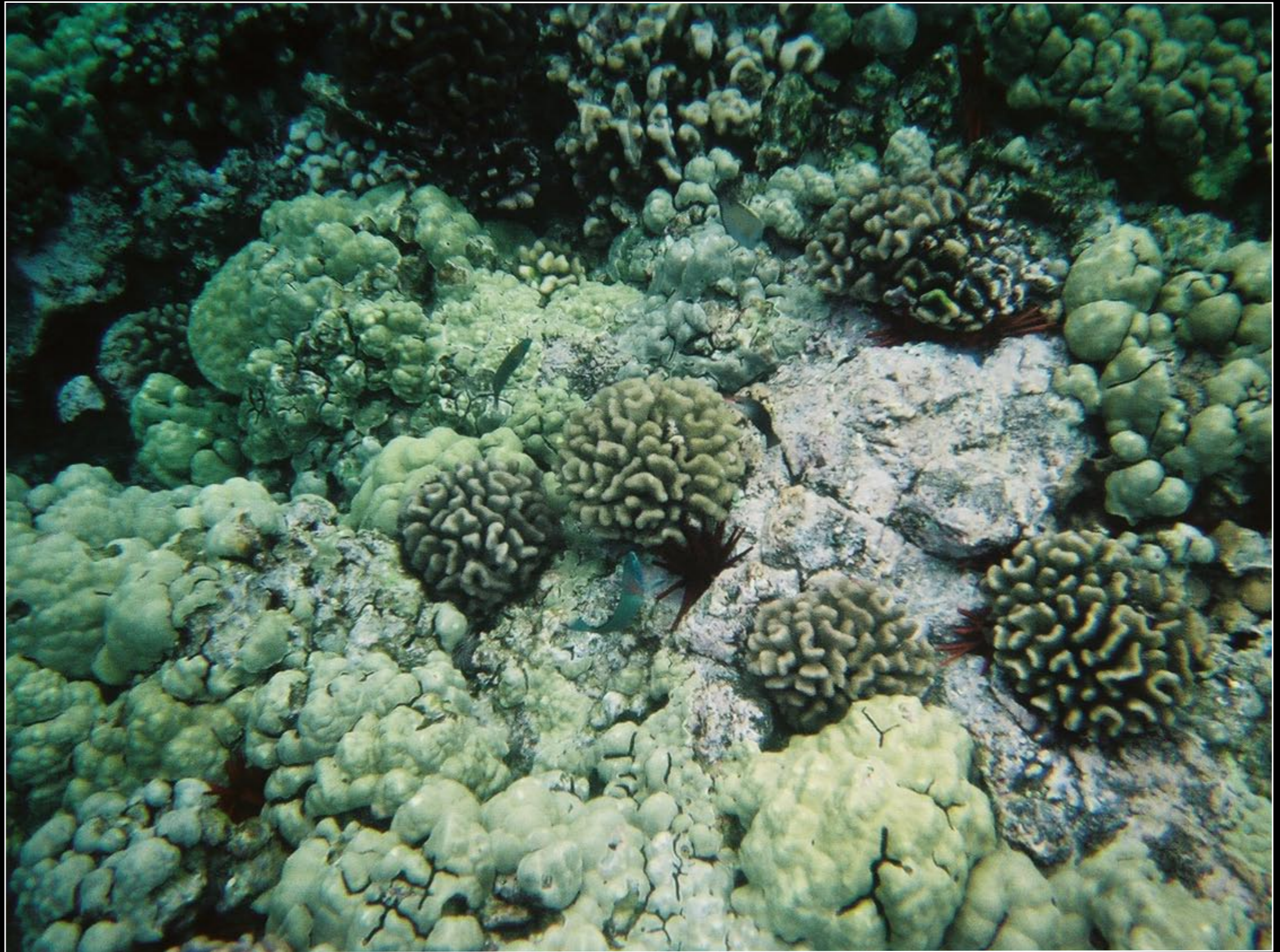
This is why they call it the "Crow's Nest"



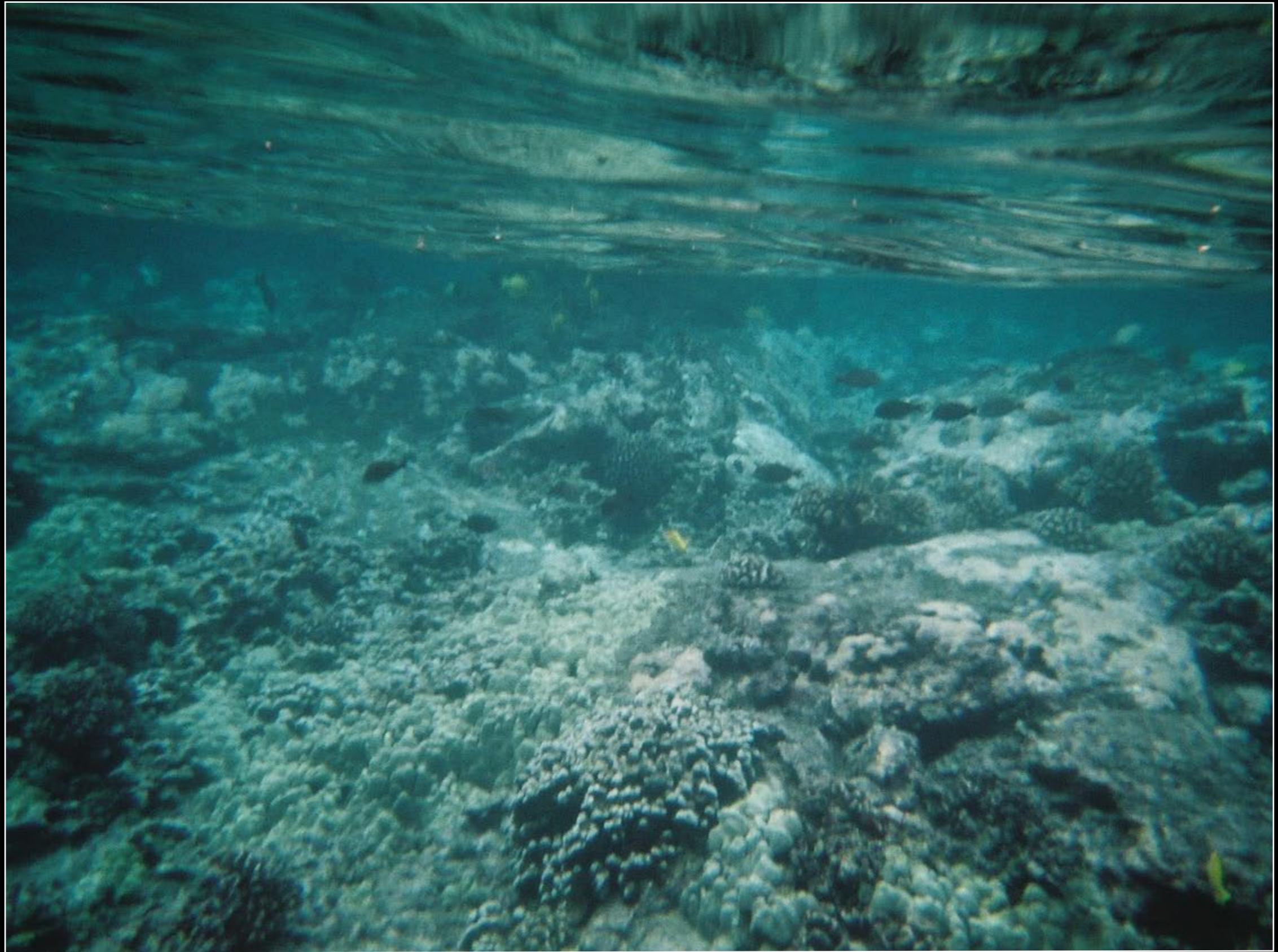


Kayaking to the snorkel spot near the Captain Cook Monument

















Black sand beach on the south side of the Big Island







Inside a crater



The Devastation Trail (lava that wiped out forest)







Giant fern



The hub of a tree fern





View of the forest, near the lava tube





The lava tube



Deep inside the lava tube





Sea turtle at Kahalu'u Beach, Big Island













"Aquatechnics" at the Kona Coast